

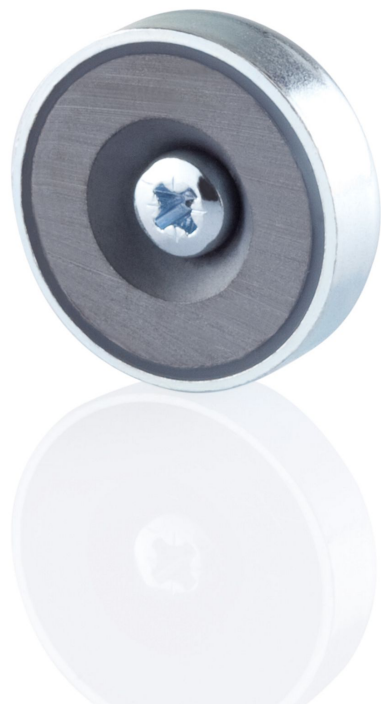
Magnet steel XTM1

BLMOUXTMASTL2000600200

Article no.: 170458

BILTON

FOCUSED
ON
LINEAR
LIGHT



20.0
mm

Length

6.0
mm

Height

20.0
mm

Width

TENDER TEXT

BILTON MOUNTING XT magnet Steel 20x6x20mm Accessories Magnet steel XTM1 Article 170458 The accessories Magnet steel XTM1 consists of Steel with a Silver surface and it is easy to assemble. Dimension (L x W x H): 20.0 mm x 20.0 mm x 6.0 mm

Magnet steel XTM1

BILTONFOCUSED
ON
LINEAR
LIGHT**BLMOUXTMASTL2000600200**

Article no.: 170458

MECHANICAL DATA

Net width [mm]	20.0
Net height [mm]	6.0
Net length [mm]	20.0
Colour	Silver
Net weight [g]	40.58
Material	Steel
Type of accessory	Monting plate

TEMPERATURE TECHNICAL DATA

Thermal conductivity	11.5
----------------------	------

PACKAGING INFORMATION

EAN	4250716909692
Article no.	170458
Customs tariff number	76042990
Length [mm]	20.0
Gross weight [g]	44.6
Gross height [mm]	6.0
Gross width [mm]	20.0
Gross length [mm]	20.0

SAFETY INFORMATION: Read the safety and installation instructions carefully and completely before commissioning. The operating instructions can be found at: www.biltongroup.com

DISCLAIMER OF WARRANTY: The technical information corresponds to the status at the time of printing and have been worked out to the best of our knowledge. However, errors and printing errors are reserved. Make sure that you always use the latest version of the data sheets. The latest data sheet can be found at: www.biltongroup.com