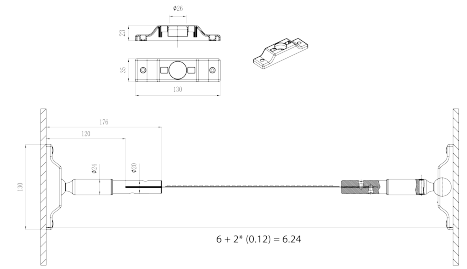


BL Skyline 6m

BILTONFOCUSED
ON
LINEAR
LIGHT**BL COR Skyline LED light system 1320lm/m 24VDC 13.5W/m IP20 940 6m black**

Article no.: 171595

**6000.0**
mm

Length

Black

Colour housing

exchangeable

Lamp type

indirekt

Lichtaustritt

TENDER TEXT

Skyline black LED lighting system with LED strip 1320 lm/m and mounting material 24VDC 13.5W/m 98lm/W IP20 CRI>90 4000K WHITE, Colours and BLT label 6 metres LED Module BL Skyline 6m Item 171595 Linear LED strip light on steel tape with movable mounting modules and cable for easy assembly and quick installation. Suitable for ambient temperatures of with a lifetime of . The BL Skyline 6m LED strip light has a luminous flux of with a power of , giving an efficiency of 98 lm/W. With a nominal voltage of DC at the connection, a maximum module length of can be achieved. In terms of lighting, the module has a color temperature of 4000 K and a beam angle of 120°. All with a color rendering index of >90 and a binning selection according to (MacAdams). The light strip can be divided every 50.0 mm, resulting in an LED spacing of 8.33 mm. Protection class IP20 Dimensions (L x W x H): 6000.0 mm x 35.0 mm x

>90

IP20

4000 K

BL Skyline 6m

BL COR Skyline LED light system 1320lm/m 24VDC 13.5W/m IP20 940 6m black

Article no.: 171595

MECHANICAL DATA

Net width [mm]	35.0
Net height [mm]	130.0
Net length [mm]	60000.0
Degree of protection (IP)	IP20
Distance [mm]	8.33
Distance relating to	LED to LED
Length of particular segments [mm]	50.0

ELECTRICAL DATA

Overall efficiency [lm/W]	98
Voltage type	DC
Protection class	III

LIGHT TECHNICAL DATA

Beam angle [°]	120
Colour rendering index CRI	>90
Colour temperature [K]	4000

PACKAGING INFORMATION

EAN	4250716948615
Article no.	171595
Length [mm]	6000.0
Gross weight [g]	2000.0
Gross height [mm]	70.0
Gross width [mm]	352.0
Gross length [mm]	346.0
State of origin	CN

* Information about the electrical and lighting technology measurements: Performance data measured after 1 min. at 25 °C ambient temperature and a light colour of 4,000 K (or RGB). These values can have a tolerance value of +/- 15%. Module length at 24 V input voltage at the module and luminous flux drop 10% over the specified length.

SAFETY INFORMATION: Read the safety and installation instructions carefully and completely before commissioning. The operating instructions can be found at: www.biltongroup.com

DISCLAIMER OF WARRANTY: The technical information corresponds to the status at the time of printing and have been worked out to the best of our knowledge. However, errors and printing errors are reserved. Make sure that you always use the latest version of the data sheets. The latest data sheet can be found at: www.biltongroup.com