

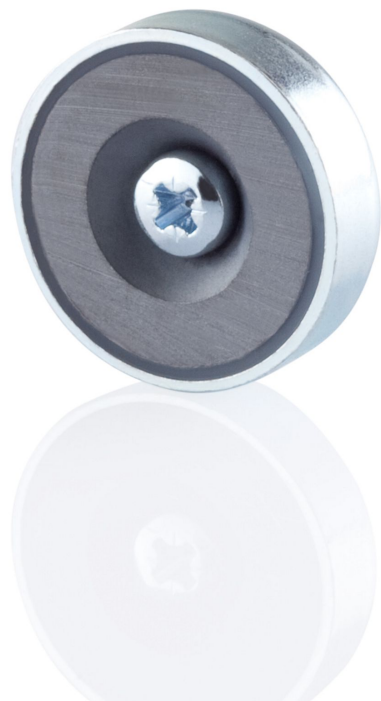
# Magnet steel XTM1

**BILTON**

FOCUSED  
ON  
LINEAR  
LIGHT

**BLine Select XTM1 mounting magnet steel for aluminium profiles D20x6mm**

Article no.: 170458



20.0  
mm

Length

6.0  
mm

Height

20.0  
mm

Width

---

## TENDER TEXT

Mounting magnet for aluminium profiles, Magnet made of steel incl. magnet, D 20 x 6mm Accessories Magnet steel XTM1 Article 170458 The accessories Magnet steel XTM1 consists of Steel with a Silver surface and it is easy to assemble. Dimension (L x W x H): 20.0 mm x 20.0 mm x 6.0 mm

---

# Magnet steel XTM1

**BILTON**FOCUSED  
ON  
LINEAR  
LIGHT**BLine Select XTM1 mounting magnet steel for aluminium profiles D20x6mm**

Article no.: 170458

## MECHANICAL DATA

Net height [mm]	5.0
Colour	Silver
Net weight [g]	7.2
Material	Steel
Type of accessory	Monting plate

## TEMPERATURE TECHNICAL DATA

Thermal conductivity	11.5
----------------------	------

## PACKAGING INFORMATION

EAN	4250716909692
Article no.	170458
Customs tariff number	76042990
Length [mm]	20.0
Gross weight [g]	10.2
Gross height [mm]	5.0
Gross width [mm]	40.0
Gross length [mm]	80.0

SAFETY INFORMATION: Read the safety and installation instructions carefully and completely before commissioning. The operating instructions can be found at: [www.biltongroup.com](http://www.biltongroup.com)

DISCLAIMER OF WARRANTY: The technical information corresponds to the status at the time of printing and have been worked out to the best of our knowledge. However, errors and printing errors are reserved. Make sure that you always use the latest version of the data sheets. The latest data sheet can be found at: [www.biltongroup.com](http://www.biltongroup.com)